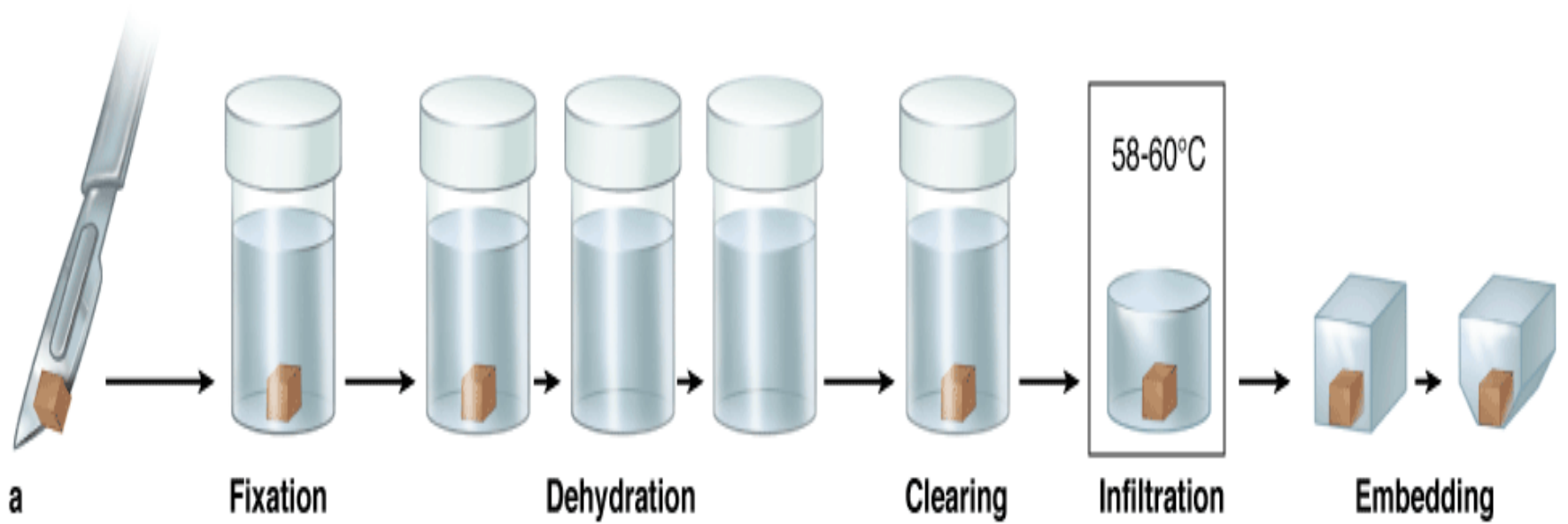


# دراسة لأنماط خلايا حيوانية مختلفة

أ. محمد أبو زيتون    أ. عبير العاني

# Preparation of Tissues for study

- التثبيت Fixation
- نزع الماء Dehydration
- Clearing
- التشريب Infiltration
- الاسجاء (ترسيخ البرافين بالعينة) Embedding
- القطع Sectioning
- التلوين Staining





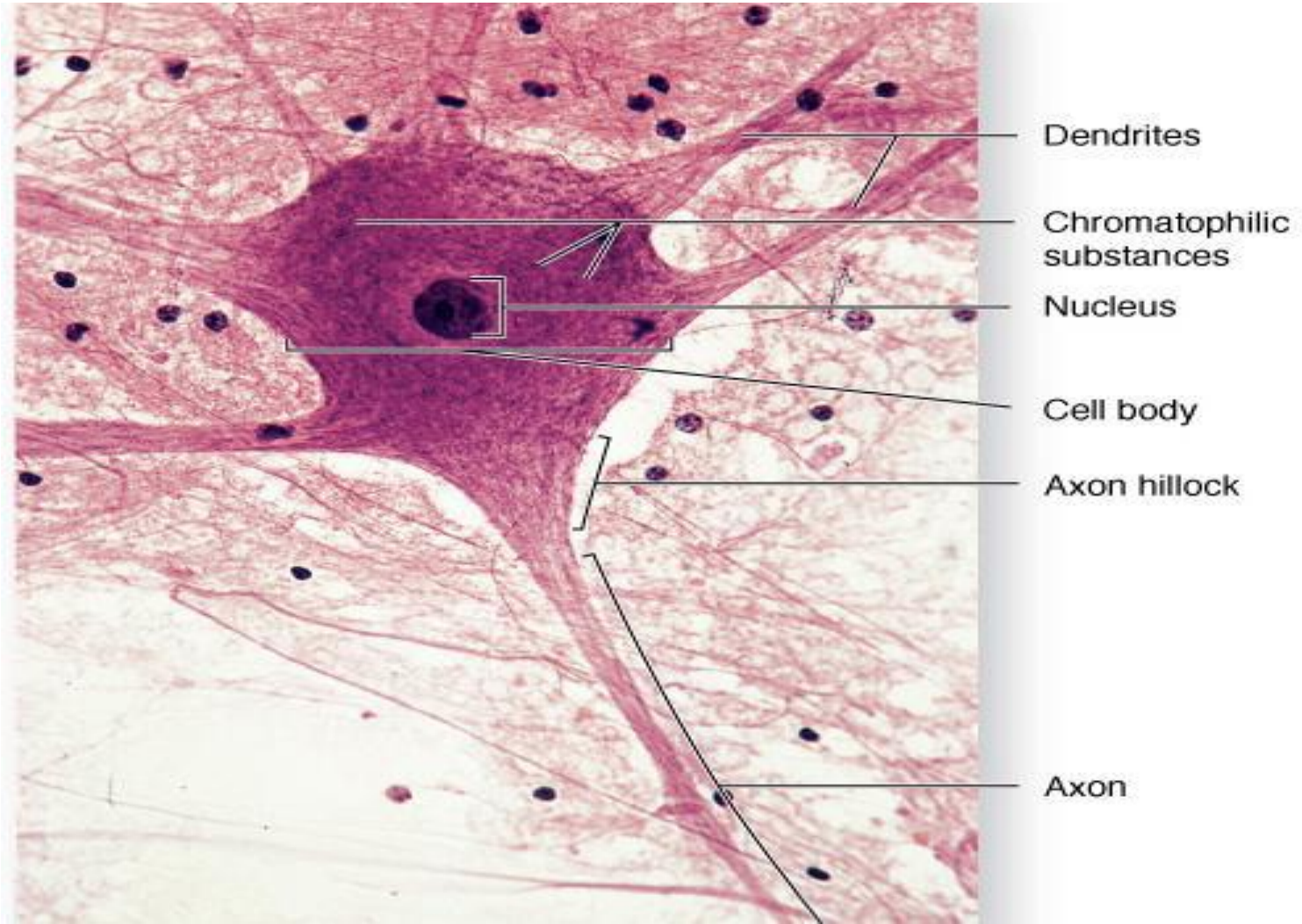






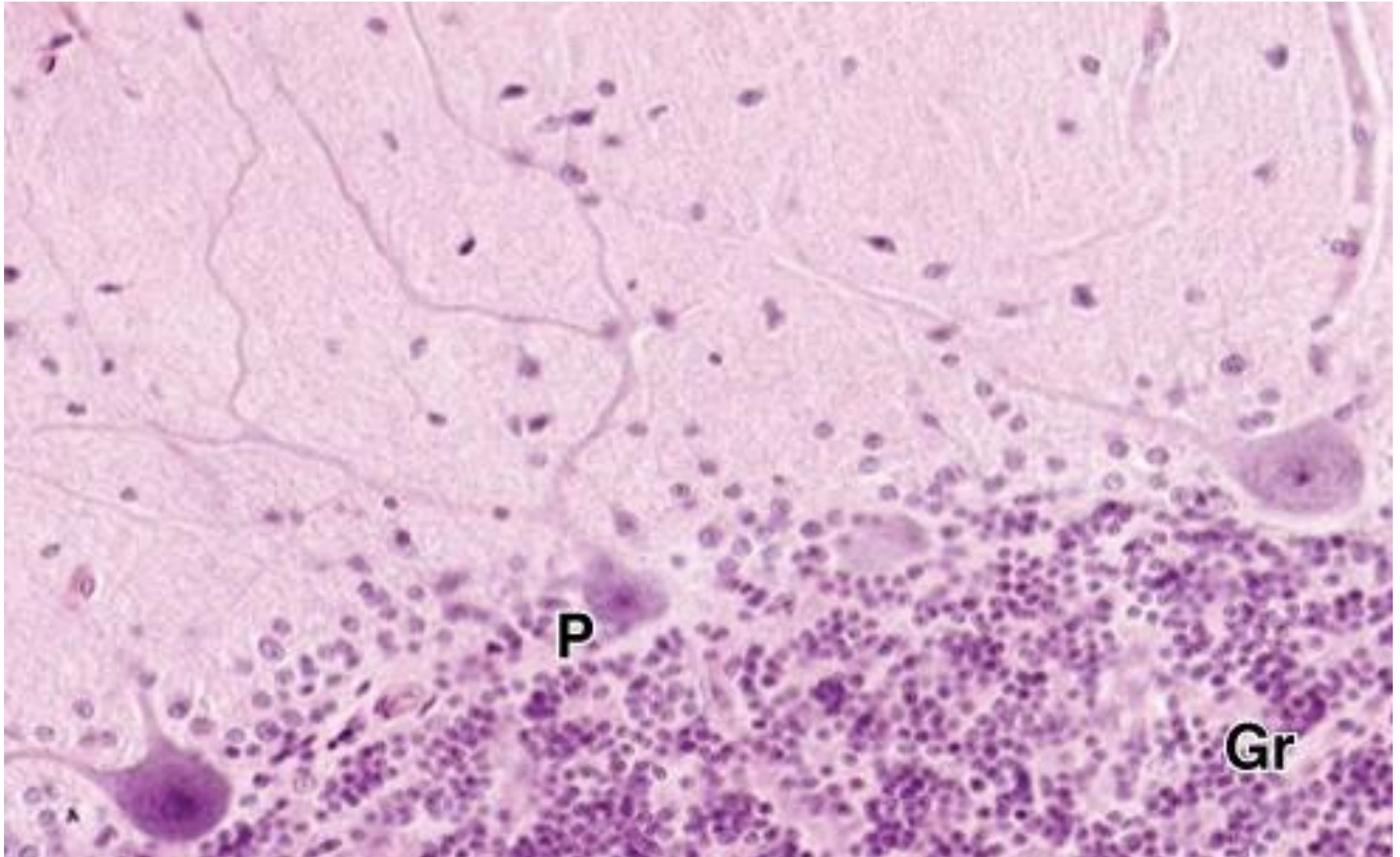
# Satellite Cell:

## الخلية النجمية



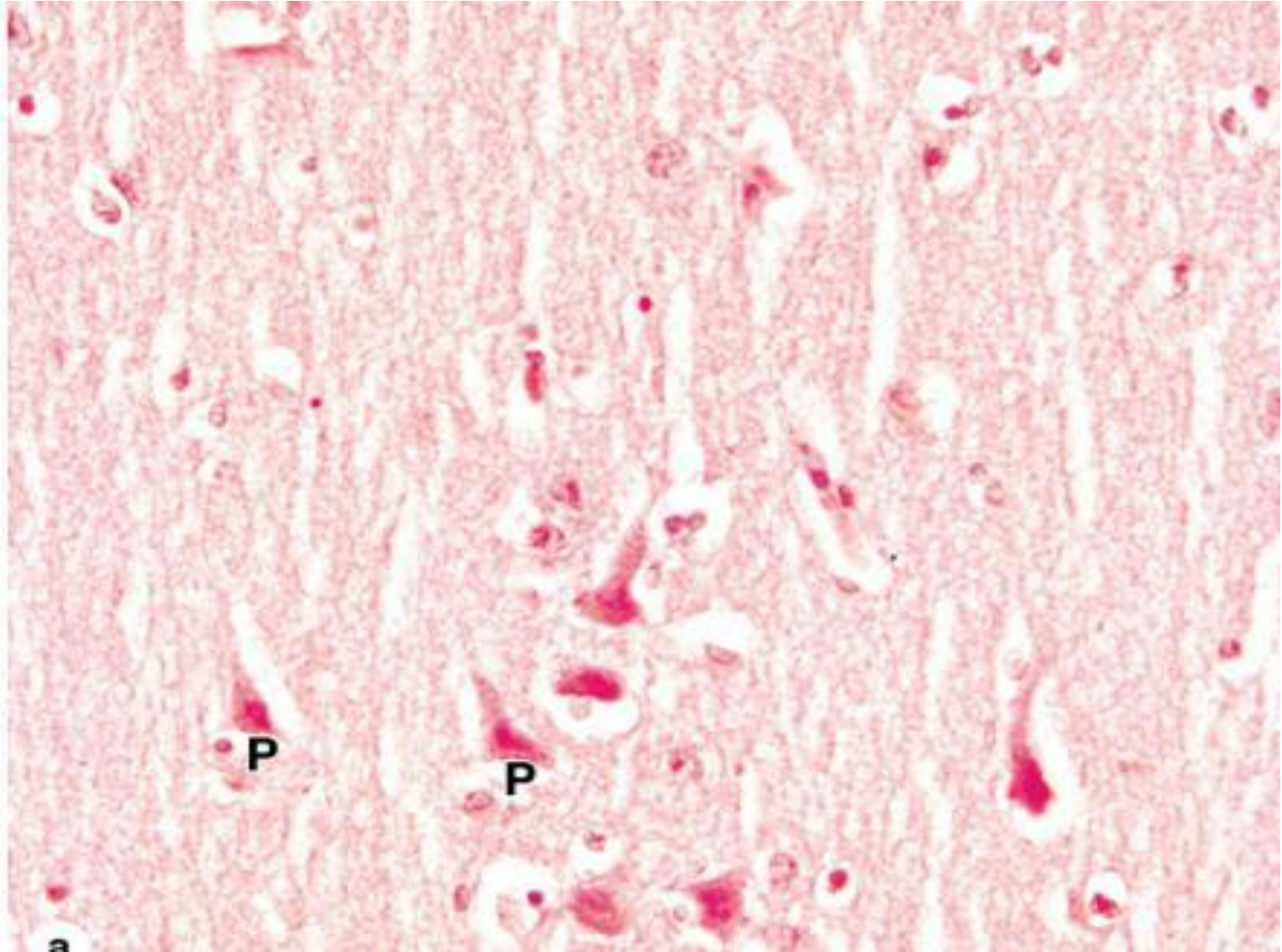
# Purkinje Cell

## الخلية الاجاصية (بوركنج)



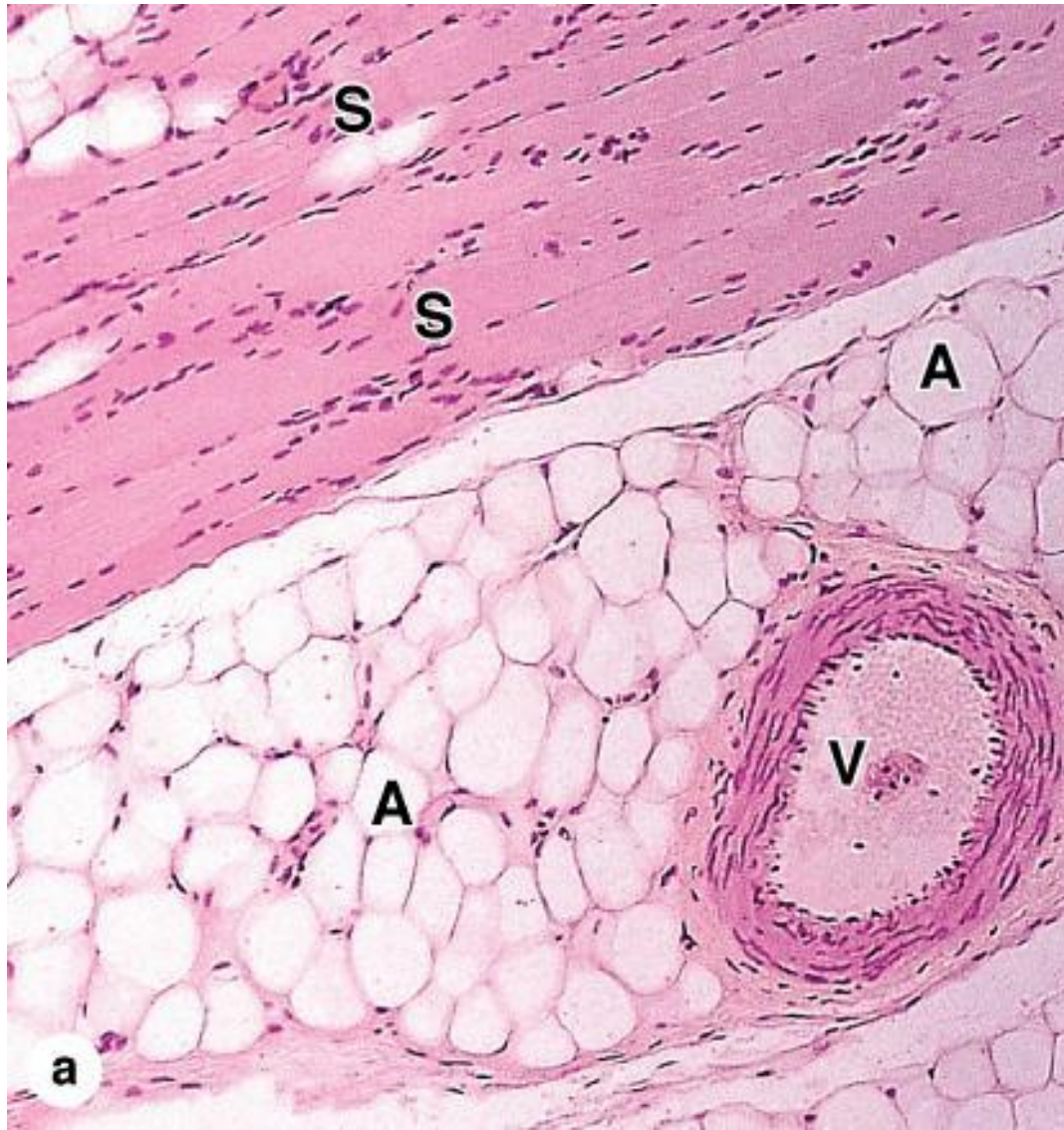


# Pyramidal cell

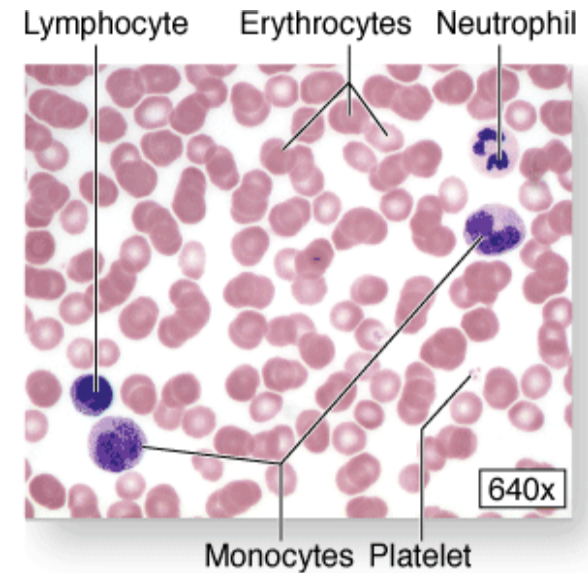
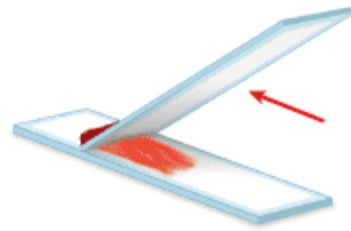




# Fat cell



# Blood cells

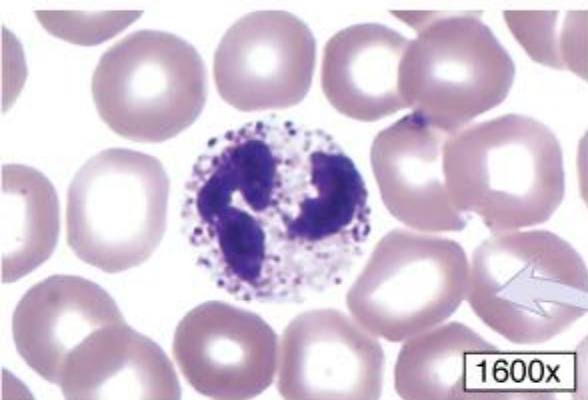


① Prick finger and collect a small amount of blood.

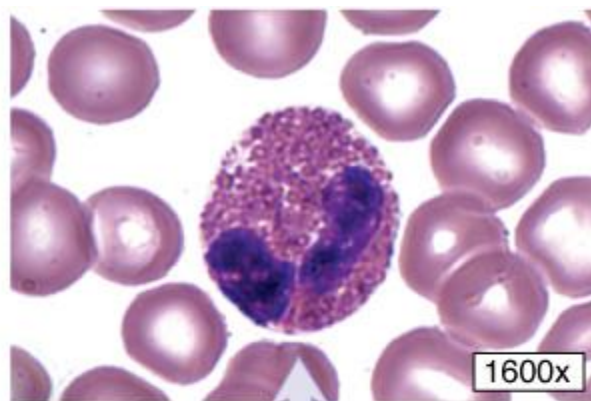
② Place a drop of blood on a slide.

③ Using a second slide, pull the drop of blood across the slide surface, leaving a thin layer of blood on the slide. After the blood dries, apply a stain for contrast. Place a coverslip on top.

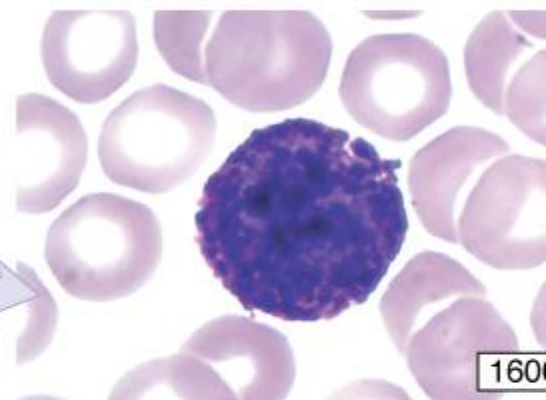
④ When viewed under the microscope, blood smear reveals the components of the formed elements.



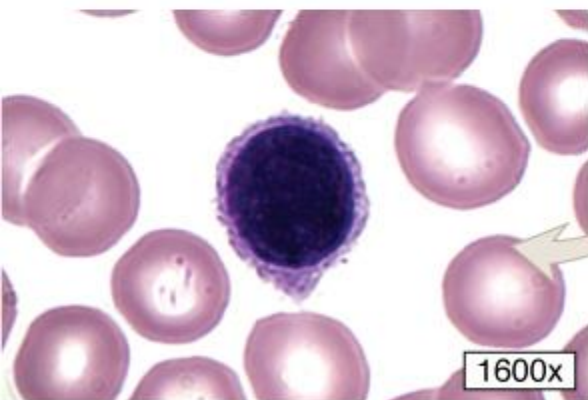
Neutrophil



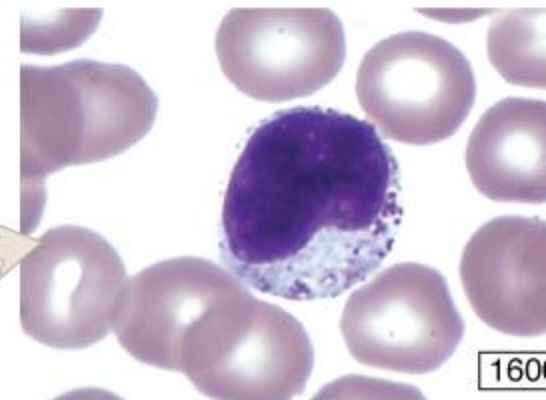
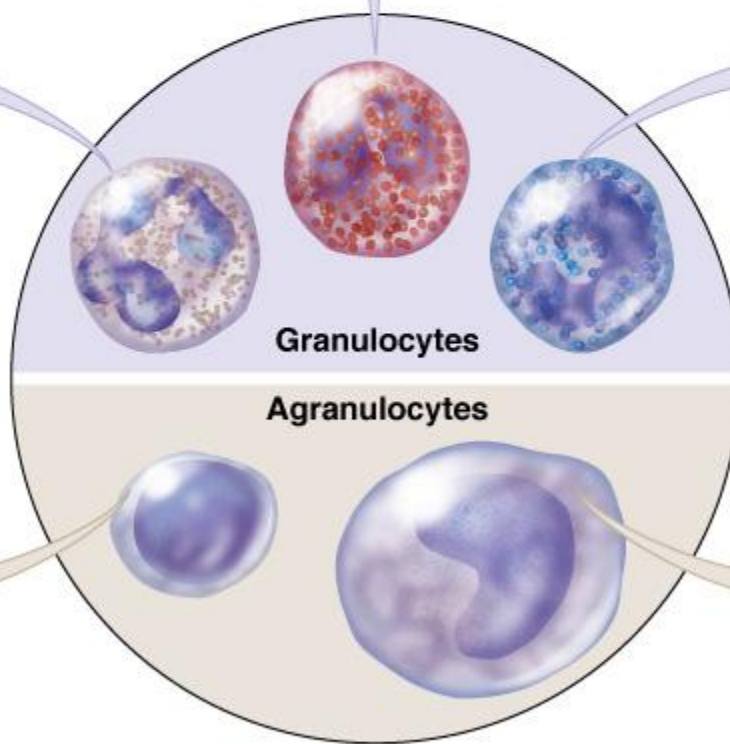
Eosinophil



Basophil



Lymphocyte



Monocyte



